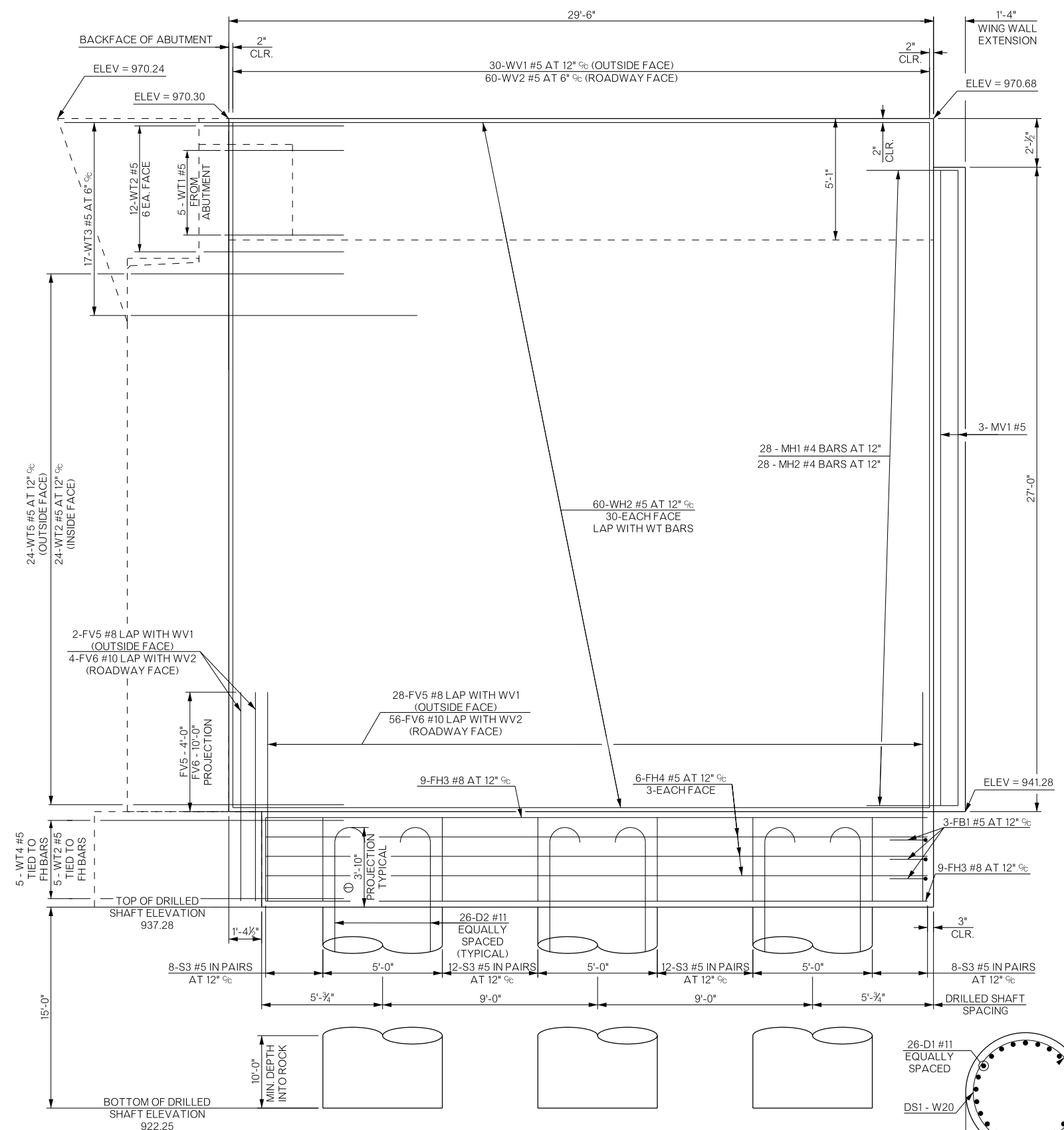


REVISIONS		
REV. NO.	DESCRIPTION	DATE



LONGITUDINAL SECTION AT PHASE ONE OF ABUTMENT NO. 2

FOR DETAILS OF AESTHETIC TREATMENTS SEE SHEETS NO. B045, B046

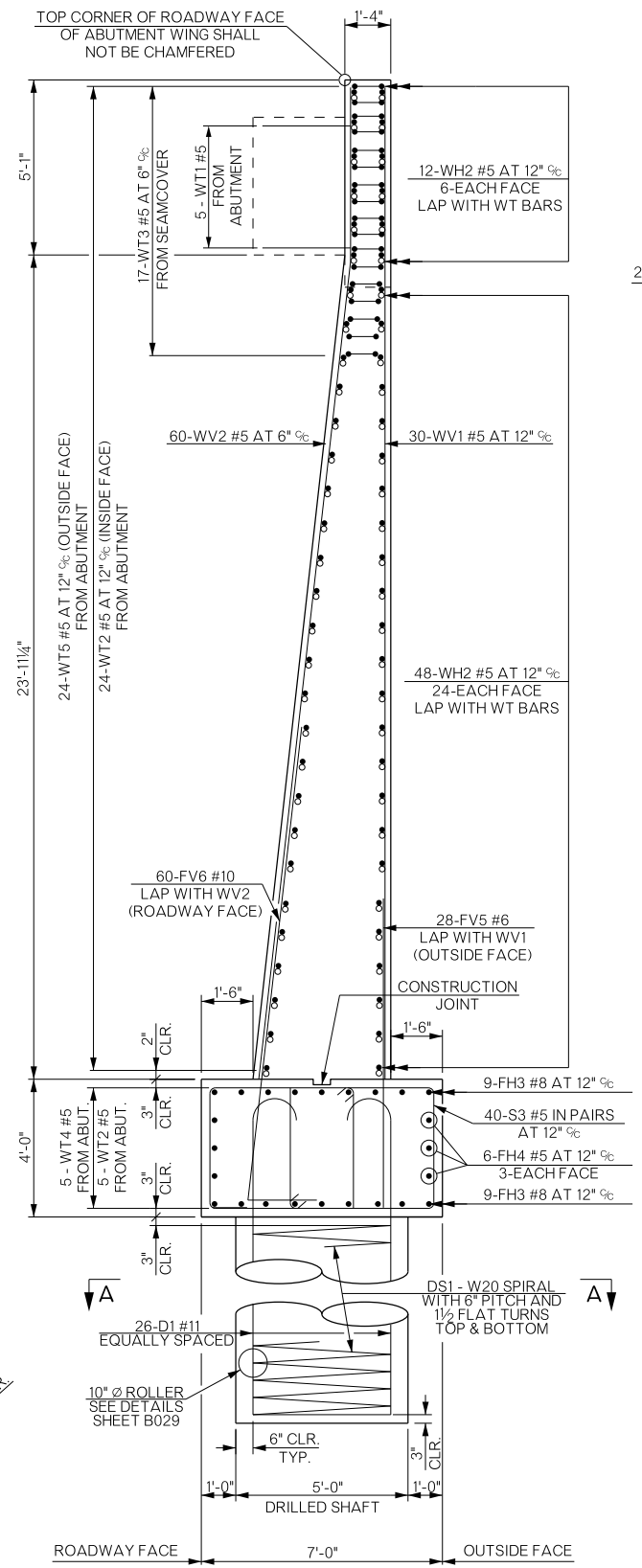
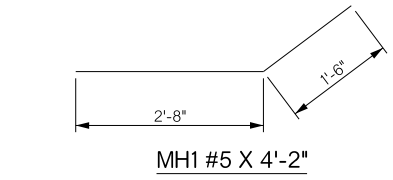
① REINFORCING BARS PROJECTING FROM THE DRILLED SHAFT SHALL BE INCLUDED IN THE COST OF THE DRILLED SHAFT. THE PROJECTION LENGTH SHALL NOT BE CONSIDERED ADDITIONAL PAY LENGTH FOR DRILLED SHAFT.

FOR DETAILS OF ROLLER PLACEMENT AND INSTALLATION SEE SHEET B029.

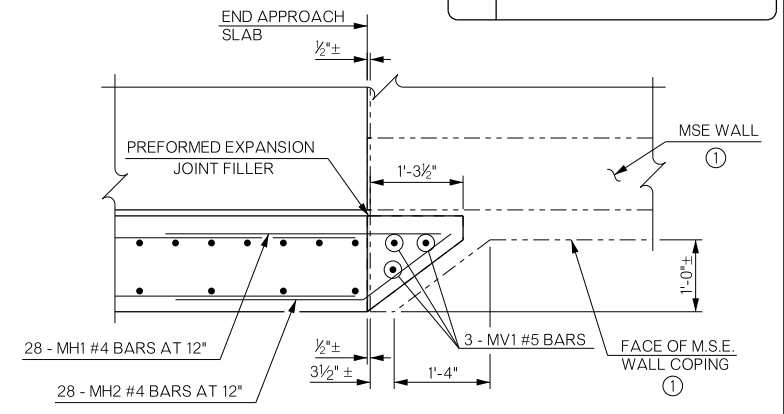
FOR DETAILS OF SPIRAL REINFORCING SPLICE SEE SHEET B029.

WATER REPELLENT TREATMENT SHALL BE APPLIED TO ALL PORTIONS OF THE WING WHICH ARE EXPOSED.

SECTION A-A

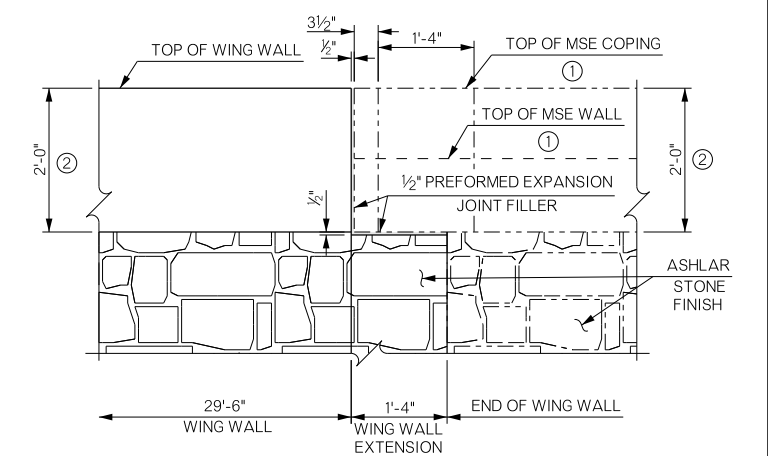


SECTION THRU WING AT BACKFACE OF ABUTMENT SEAT



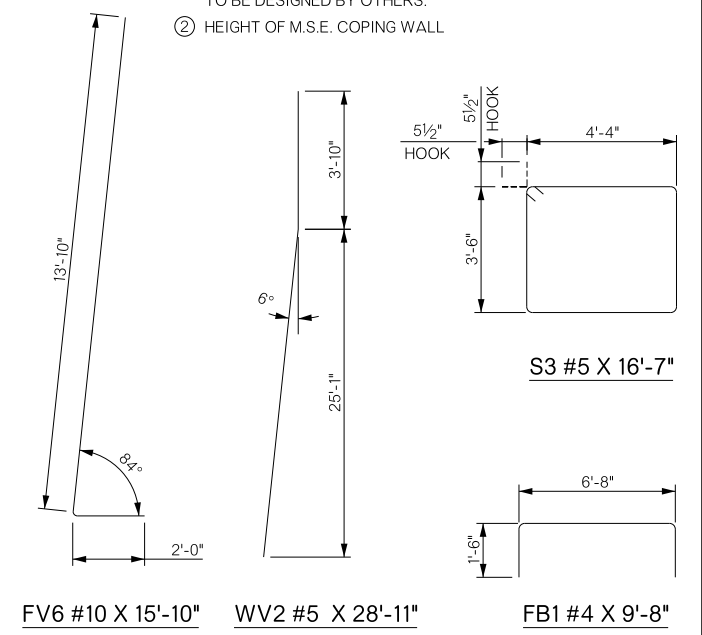
PLAN DETAIL OF WING WALL EXTENSION REINFORCING

① SHOWN PICTORALLY. TO BE DESIGNED BY OTHERS.



ELEVATION DETAIL OF WING WALL EXTENSION REINFORCING

① SHOWN PICTORALLY. TO BE DESIGNED BY OTHERS.
② HEIGHT OF M.S.E. COPING WALL



FV6 #10 X 15'-10"

WV2 #5 X 28'-11"

FB1 #4 X 9'-8"

BRIDGE 'A' SH-33 OVER COTTONWOOD CREEK	LOGAN COUNTY	Design	GT	11/15
DETAILS OF ABUTMENT NO. 2 (SHEET 4 OF 8)		Detail	MAP	11/15
		Check		
STATE OF OKLAHOMA		DEPARTMENT OF TRANSPORTATION		
JOB/PIECE NO. 21860(04)		SHEET NO. B025		